

PLANOMAT XT

Flexible advanced technology
for your production



Key Data

The PLANOMAT XT – high-quality technology for profile grinding.

- Five machine sizes (408/412/608/612/620)
- Grinding spindle drive up to 24,5 kW
- Optionally with linear direct drive



Blohm Jung GmbH

Productivity, performance and precision – three attributes which users worldwide associate with surface and profile grinding machines from BLOHM and JUNG. Our machines have been in use worldwide for decades in widely varying fields of application and under very different conditions. The experience gained from over 35,000 delivered machines is constantly incorporated into further developments and innovations, increasing our customers' production efficiency even further. The product portfolio of Blohm Jung GmbH extends from surface grinding machines through application-oriented universal machines to customer-oriented production machines. Our service and technology specialists support our customers throughout the entire lifecycle of the machine. From grinding tests through training and maintenance contracts to retrofits, we offer our customers prompt and personal advice.

In 2008 the two established brands BLOHM and JUNG merged under one roof. Blohm Jung GmbH has thus combined its extensive know-how and constantly enables new, higher standards in the area of precision, quality and cost efficiency. There are also many opportunities for tailoring production solutions to individual customer requirements.

As part of the UNITED GRINDING Group, Blohm Jung GmbH is represented internationally with offices in India, China, Russia and the USA. A further 40 sales and service agencies guarantee a worldwide presence and customer proximity. The company's main locations are the development and production facility in Hamburg and the service and technology center in Göppingen.

PLANOMAT XT

Higher axis speeds, higher accelerations and increased system rigidity – the combination of these improved influencing factors consistently leads to an increase in productivity while at the same time improving workpiece quality. These characteristics distinguish the PLANOMAT XT as a universal, robust and powerful surface and profile grinding machine, which consistently builds on the experience and quality of the very successful PLANOMAT HP.

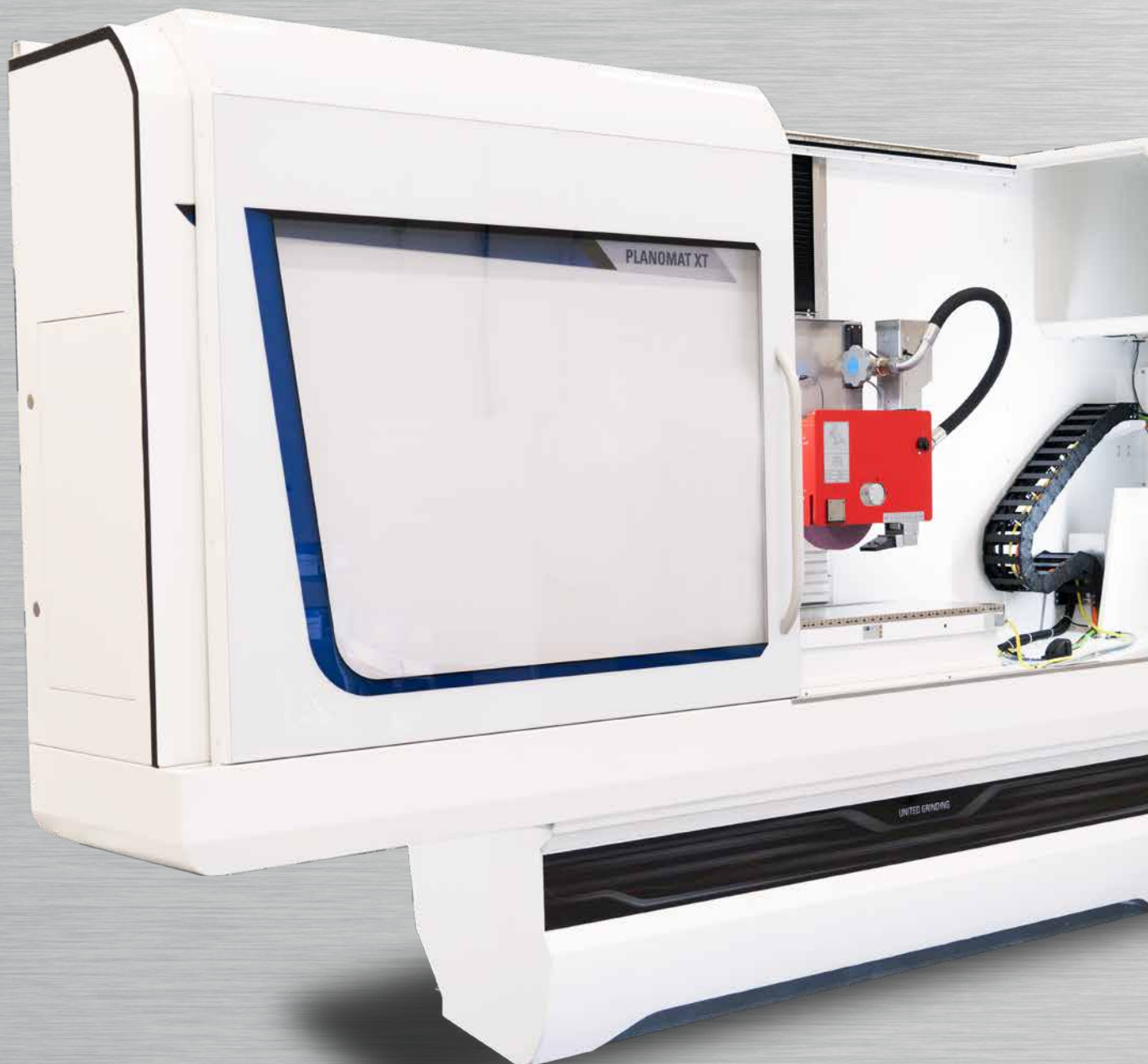
Characteristics

Dimensions

- 5 machine sizes with the following grinding ranges:
 - 400×800 mm
 - 400×1,200 mm
 - 600×800 mm
 - 600×1,200 mm
 - 600×2,000 mm

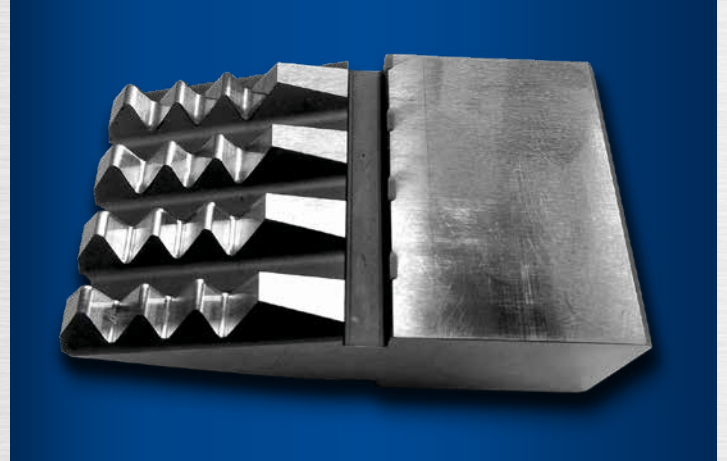
Hardware

- Modular system
- High quality components comprising spheroidal graphite iron
- Thermal and vibration engineering characteristics optimized via finite element analysis
- Precision linear guideways
- High quality, recirculating ballscrews



Software

- Siemens 840D solution line with safety functions
- Optimal operator guidance
- Programming with menu-guided grinding and dressing cycles



The PLANOMAT XT has been designed purely as a high performance surface and profile grinding machine for flexible applied technology. It offers the flexibility of a universal machine for single part production up to complex production tasks.

Grinding spindle drives up to 24.5 kW guarantee outstanding performance using conventional as well as all CBN grinding methods.

A large spectrum of standard accessories and special part clamping and part handling systems offer a quick and economic adaptation to customer specific production requirements at high quality.



Control system and software

1

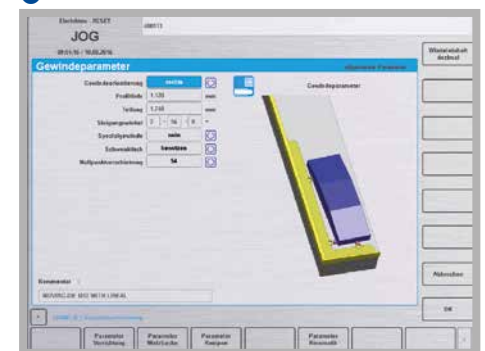


The best machines in a performance class offer more than just technically advanced components. Their high capabilities are made possible by the use of perfectly matched software and technology.

The CNC control Siemens Sinumerik 840D solution line with graphical operator guidance especially developed for grinding applications guarantees an optimal process. The simple programming is supported by menu guided grinding and dressing cycles.

The software option GripsProfile is a comfortable tool, especially for the single piece and batch production, for the automatic generation of grinding and dressing programs.

2



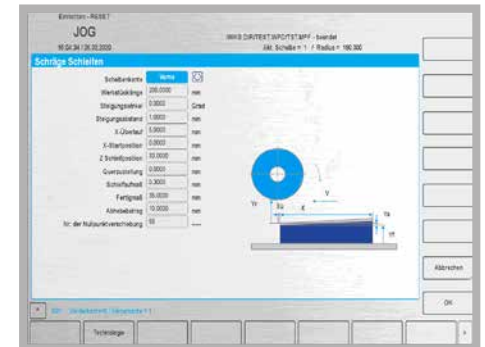
3



4



5



- 1 Control panel
- 2 Thread rolling die grinding
- 3 Contour parallel dressing

- 4 Basic data grinding wheel data
- 5 Taper grinding geometry data

UNITED GRINDING Digital Solutions™



No unscheduled machine downtime and optimally used resources thanks to Digital Solutions: The package offers monitoring of machine parameters and processes and provides instant connectivity and communication.

- **Production Monitor**

Keep the overview: for example, running times and non-productive times, quantities or malfunction times are displayed in real time.

- **Remote Service**

Always there for you, anytime and anywhere: Remote Service ensures fast, system-specific support from specialists.

- **Service Monitor**

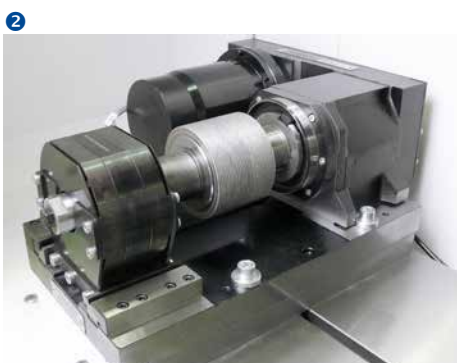
Everything in view – at the right time: Service Monitor shows which maintenance activities have to be carried out and when.

Optimum dressing

The table-mounted dressing device PA-TL 200S is suitable for diamond profile rolls up to 200 mm width or with universal diamond forming rolls and pre-profiling tool for contour dressing with quick change device for the roll pin.

The articulating dressing attachment PA-T130 enables continuous path controlled dressing by means of using the machine axes and the CNC controlled articulating axis of the dresser. The equipment includes an electronic measuring device with stand, probe and calibration ball.

- By using process-optimised dressing methods, workpieces can be manufactured with high precision at short cycle times and with minimum grinding wheel wear.



Application examples

Automotive industry and suppliers

1



2



3

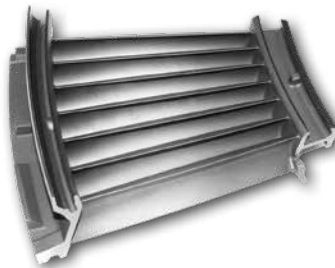


Turbine industry

4



5



6



Machine building

7



8



9



- 1 Piston rack nut
- 2 Sector shaft
- 3 Rocker arms

- 4 Blade
- 5 Vane
- 6 Shroud

- 7 Hirth coupling
- 8 Chuck jaw
- 9 Pump rotor

Tool and die industry

①



②



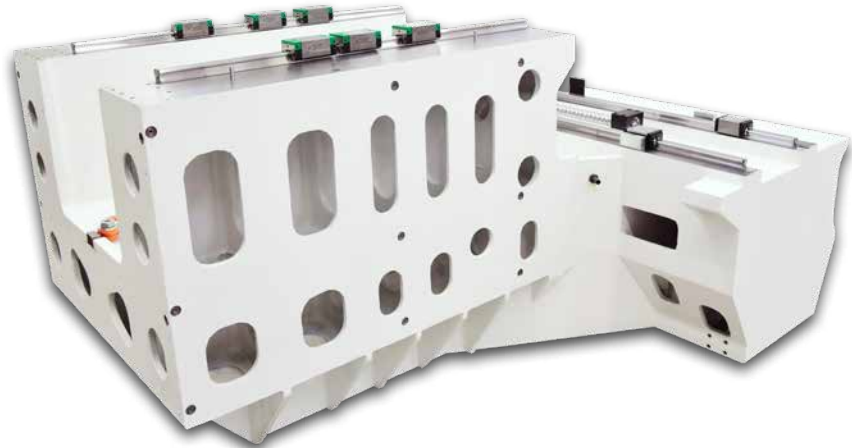
③



Well-proven construction principle

- The modular system of the PLANOMAT XT with high-quality components made of spheroidal graphite iron has been optimised thermally and vibration-wise via finite element analysis.
- The use of machine components specifically designed on the modular system ensures high precision and a long machine life.

④



⑤



⑥



① Fin disc

② Powder metal punch

③ Wood chipper blade

④ Machine bed

⑤ Precision linear guideways

⑥ Re-circulating ballscrew

Customer Care



BLOHM and JUNG surface and profile grinding machines should fulfill the customers requirements for as long as possible, work cost-effectively, function reliably and be available at all times. From “start up” through to “retrofit” – our Customer Care is there for you throughout the working life of your machine. 6 professional helplines and more than 25 service technicians are available in your area, wherever you are in the world.

- We will provide you with fast, uncomplicated support.
- We will help to increase your productivity.
- We work professionally, reliably and transparently.
- We will provide a professional solution to your problems.



Service

Customer service
Customer consultation
HelpLine
Remote service



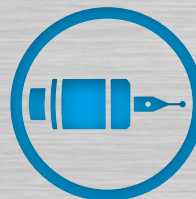
Digital Solutions™

Remote Service
Service Monitor
Production Monitor



Start up

Commissioning
Warranty extension



Material

Spare parts
Replacement parts
Accessories



Qualification

Training
Production support



Rebuild

Machine overhaul
Assembly overhaul



Prevention

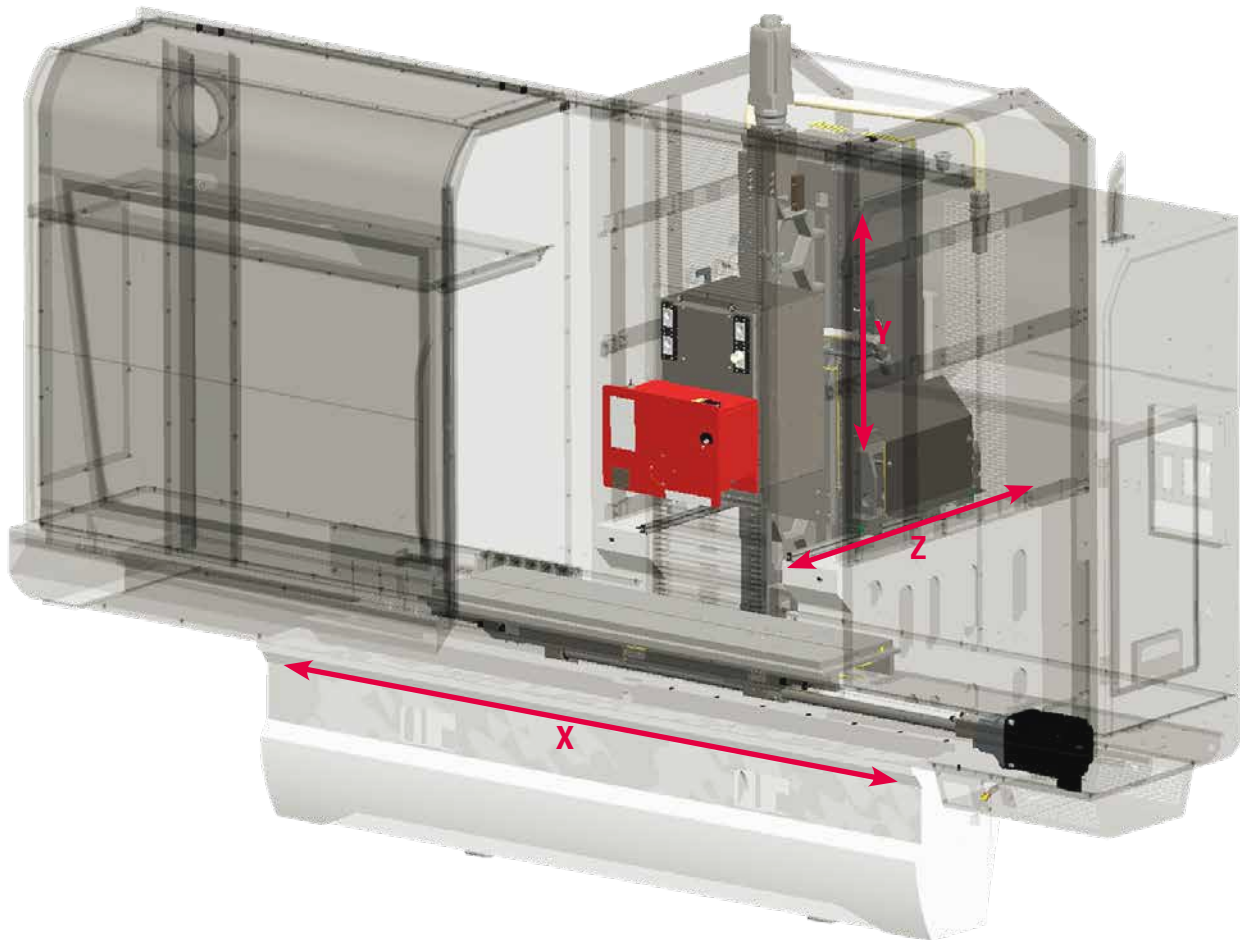
Maintenance
Inspection



Retrofit

Modifications
Retrofits
Machine trade-in

Technical data



PLANOMAT XT		408	412	608	612	620
Grinding Range	mm	400 × 800	400 × 1,200	600 × 800	600 × 1,200	600 × 2,000
Table clamping area with auxiliary surface	mm	400 × 1,300	400 × 1,700	600 × 1,300	600 × 1,700	600 × 2,500
Distance table to spindle center	mm	950				
X-axis, machine table longitudinal travel, max.	mm	1,100	1,500	1,100	1,500	2,300
Feed rate	mm/min	30 ... 40,000				
Y-axis, wheel head vertical travel	mm	800				
Feed rate	mm/min	4 ... 10,000				
Z-axis, column cross travel	mm	360	360	560	560	560
Feed rate	mm/min	4 ... 16,000				
Grinding spindle drive, variable speed, AC motor	kW/rpm	15/6,000 (Option 24,5/6,000)				
Grinding wheel size (d x w x bore)	mm	400 × 100 × 127				
Dimensions Width	mm	4,000	4,800	4,000	4,800	6,400
Depth, incl. electr. cabinet and panel	mm	3,230	3,230	3,430	3,430	3,430
Height	mm	2,970	2,970	2,970	2,970	2,970
Machine weight, incl. electrical cabinets	kg	7,300	7,600	8,500	8,900	10,800

We reserve the right to make technical changes



Blohm Jung GmbH

Location Hamburg

Kurt-A.-Körber-Chaussee 63-71
D-21033 Hamburg
Phone +49 40 33461 2000
Fax +49 40 33461 2001
sales-hh@blohmjung.com

Location Göppingen

Jahnstraße 80-82
D-73037 Göppingen
Phone +49 7161 612 0
Fax +49 7161 612 170
sales-gp@blohmjung.com

www.blohmjung.com

